

Full Description

CANARIAN LAND HOUSE WITH POOL, IN AN IDYLIC LOCATION

ROMANTIC PROPERTY FOR NATURE AND GARDEN LOVERS, WITH DIFFERENT POSSIBILITIES OF USE

IN KEYWORDS:

- Country house of about 145 m² + closed garage 2 cars + pool + sun deck + shower
- 1 living room
- Dining kitchen
- 3 bedrooms
- Property of about 3.850 m²
- Municipality of EL PASO
- Locality of TACANDE
- calm environment
- ca. 766 m above sea level
- With mountain view



BUILDINGS:

- Single storied country house of approx. 145 m² overbuilt space

- 1 living room
- Dining kitchen
- 3 bedrooms
- 2 bathrooms
- Storage room
- Romantic Outdoor seatings

- Outside utility room

- Storage shed

- Wooden house of about 14 m²

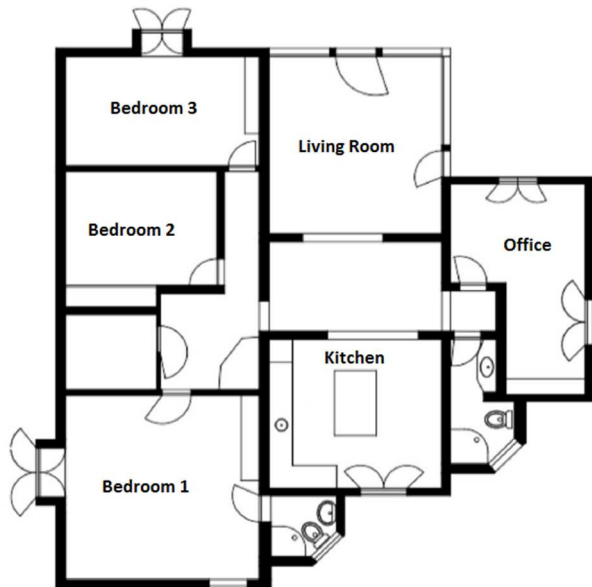
- Pool area

- Sun deck
- Outside shower

- Closed garage for 2 cars

- Water tank of ca. 400 m³

- Horse paddock



GENERAL CONDITION:

- Very good general condition
- Renovated in 2007

BUILDING MATERIALS:

- Walls made of common hollow blocks
- Flat roofs
- Wooden doors and windows with double glazing
- In part, wood floors
- In part, ceramic floor tiles

CLIMATE CONTROL:

- Fireplace in the living room
- Air conditioning hot/cold in the 3 bedrooms

HOT WATER:

- Gas boiler

WASTEWATER:

- Standard island-typical soakaway

GROUND:

- The property has approx. 3.850 m²
- Flowers
- Lawn
- Shrubs
- Trees
- Palm trees
- Almond trees
- Completely fenced property
- Horse paddock

SUPPLIERS:

- Town water connection
- Private water share
- Irrigation water
- Electricity
- SAT-TV

- 3G-internet

INVENTORY:

- Furniture and fixtures are included in the price

ROAD COMMUNICATION:

- asphalted road

WALKING DISTANCES:

- City center approx. 15 Minutes

DRIVING DISTANCES:

- El Paso in about 5 minutes
- Los Llanos in about 10 minutes
- Santa Cruz in about 35 minutes
- Airport in about 35 minutes
- Beach approx. 20 minutes
- Health center in about 5 minutes
- Hospital approx. 25 minutes

HIKING TRAILS:

- A lot of hiking possibilities right out of the property
- Wide network of trails in the area

MORE INFORMATION:

- Residential use or touristic use possible
- Gardens with large trees
- Automatic gate with remote control
- Automatic irrigation

Location :

Camino JUANA MORALES 29,
38750 EL PASO, ile de LA PALMA, CANARIES

28°38'35.67" N / 17°51'54.86" O

